



REFRIGERATION

COUNTERTOP REFRIGERATED SHOWCASE - 120L / 160L CAPACITY

Item #: 27156
Model: RS- CN-0120

Item #: 27157
Model: RS- CN-0160

Item #: 27156
(120L)

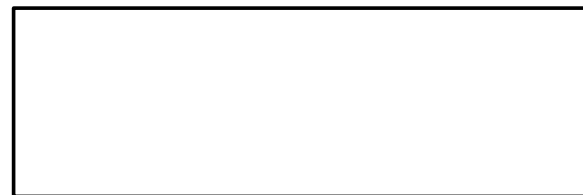


Item #: 27157
(160L)



- Eye catching internal LED lighting
- Digital temperature controller and display
- Front curved glass

- Adjustable chrome plated shelves
- Sliding doors
- Automatic defrost



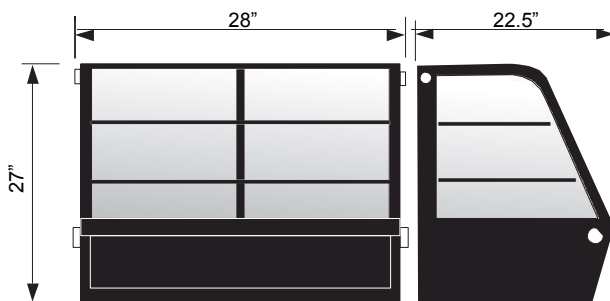
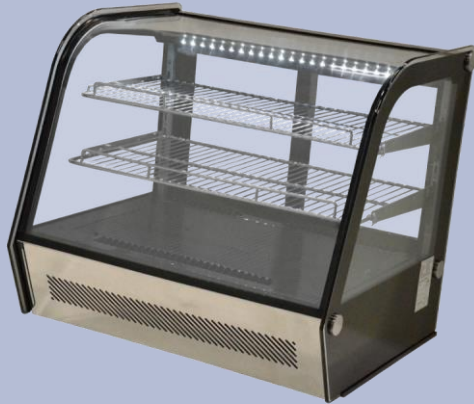
Authorized Dealer

REFRIGERATION

COUNTERTOP REFRIGERATED SHOWCASE -
120L / 160L CAPACITY



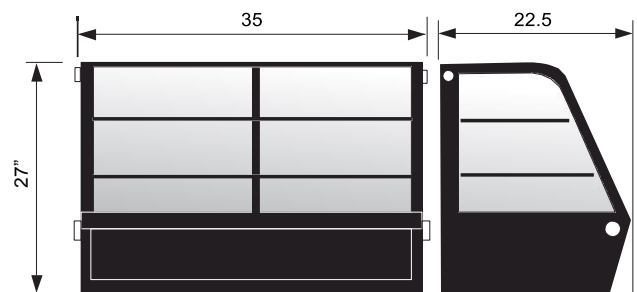
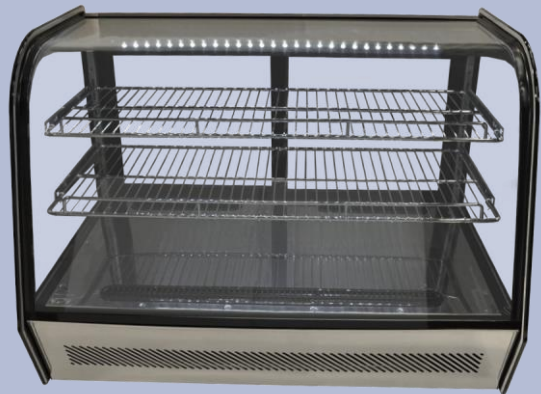
Countertop Refrigerated Showcase
(120L Capacity)



TECHNICAL SPECIFICATION

ITEM NUMBER	27156
MODEL	RS-CN-0120
CAPACITY (L/ CU. FT.)	120L / 4.24 Cu. Ft
RACK SIZE	14.5" x 25", 13.25" x 25" 37cm x 64cm, 34cm x 64cm
TEMPERATURE	0° ~ 12°C / 32° ~ 53.5°F
POWER INPUT	230W
REFRIGERANT	R-134A
ELECTRICAL	110V / 60 / 1
DIMENSIONS (WDH)	28" x 22.5" x 27" 71cm x 57cm x 69cm
PACKAGING DIMENSIONS (WDH)	30.5" x 25" x 29.25" 77cm x 64cm x 74cm
WEIGHT	141 lbs./ 64kg
PACKAGING WEIGHT	145.5 lbs/ 66kg

Countertop Refrigerated Showcase
(160L Capacity)



TECHNICAL SPECIFICATION

ITEM NUMBER	27157
MODEL	RS-CN-0160
CAPACITY (L/ CU. FT.)	160 L / 5.65 Cu. Ft
RACK SIZE	14.5" x 32", 13.25" x 32" 37cm x 81cm, 34cm x 81cm
TEMPERATURE	0° ~ 12°C / 32° ~ 53.5° F
POWER INPUT	230W
REFRIGERANT	R-134A
ELECTRICAL	110V / 60 / 1
DIMENSIONS (WDH)	35" x 22.5" x 27" 89cm x 57cm x 69cm
PACKAGING DIMENSIONS (WDH)	37.5" x 25" x 29.25" 95cm x 64cm x 74cm
WEIGHT	156 lbs./ 71kg
PACKAGING WEIGHT	162 lbs/ 73kg

OMCAN INC.

Telephone: 1-800-465-0234
Fax: (905) 607-0234
E-mail: sales@omcan.com
Website: www.omcan.com



Follow us to keep up to date with the
latest news and offers

